

# Connecting your own device to Turramurra High School WiFi Windows 7

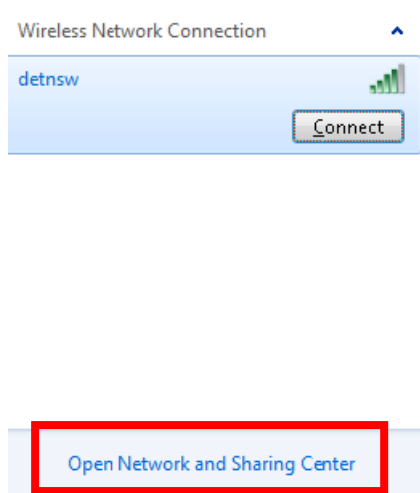


Only laptops with **802.11n 5GHz** standard wireless capability will be able to connect to the DER wireless.

- 1) Click on the wireless connection icon at the bottom right of your screen.



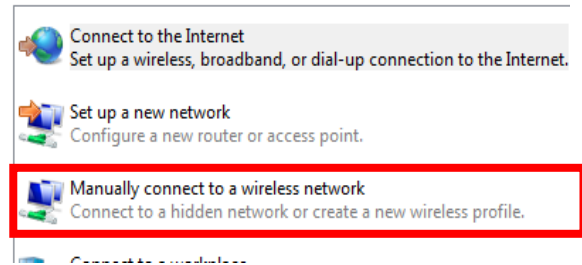
- 2) Click **Open Network and Sharing Centre**.



- 3) Click on **Set up a new connection or network**



- 4) Click **Manually connect to a wireless network**.



- 5) Enter the details as below, then click **Next**.

Enter information for the wireless network you want to add

Network name:

Security type:

Encryption type:

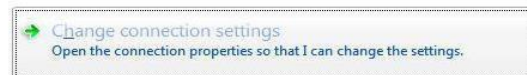
Security Key:   Hide characters

Start this connection automatically

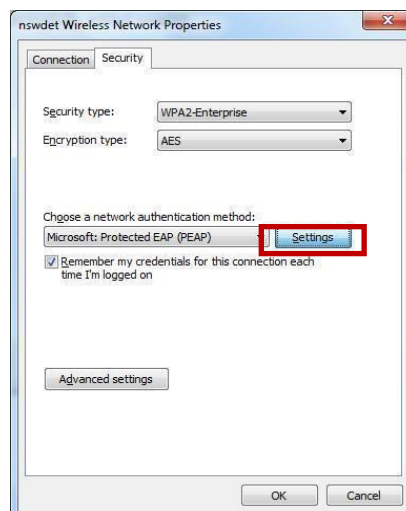
Connect even if the network is not broadcasting

- 6) Click **Change Connection Settings**.

Successfully added nswdet



- 7) Go to the **Security** tab and complete make sure the details are as shown below, then click **Settings**.



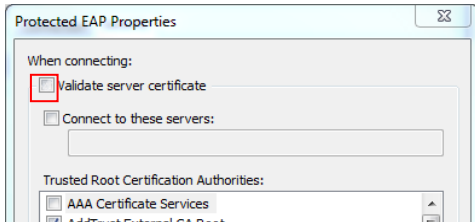
# Connecting your own device to Turrumurra High School WiFi



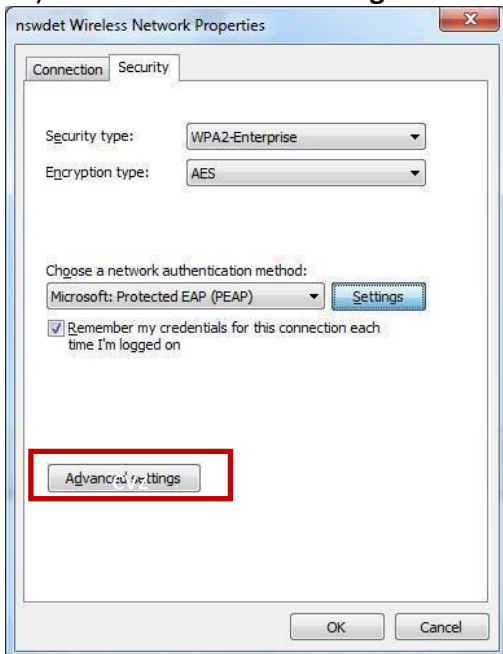
8) Untick this open, then click **OK**.



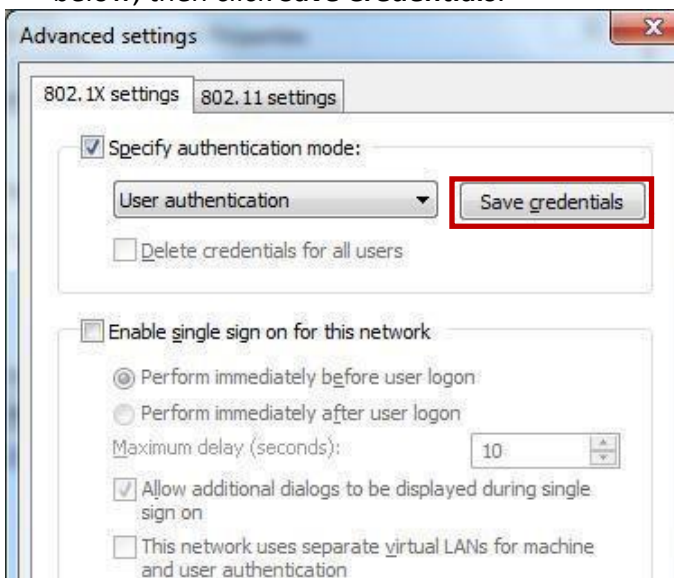
9) Untick **Validate server certificate**



10) Click on **Advanced Settings**.



11) Change the authentication settings as shown below, then click **Save Credentials**.



12) Enter your DET Internet username and password in the pop-up box. You need to add **@detnsw** to your username and click **OK**. For example, [First.Lastname18@detnsw](mailto:First.Lastname18@detnsw).

You should now be able to connect to the DET Wireless network. You may need to reselect the detnsw connection and connect manually if required.

13) Open any browser (IE, Edge, Chrome, etc.) and go to <http://detnsw.net>

User Name: Your school username with @det.nsw at the end (e.g. [joe.smith@detnsw](mailto:joe.smith@detnsw)) Password: your school password.